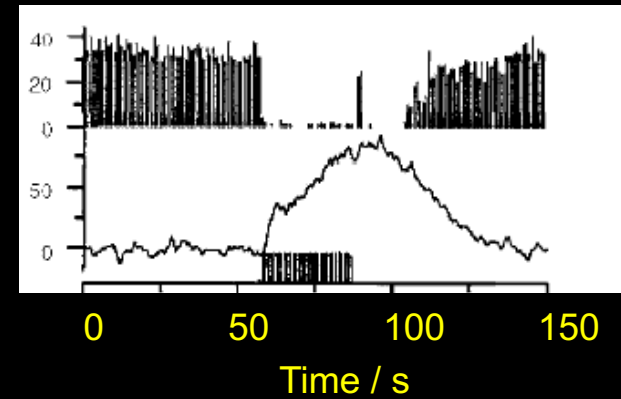
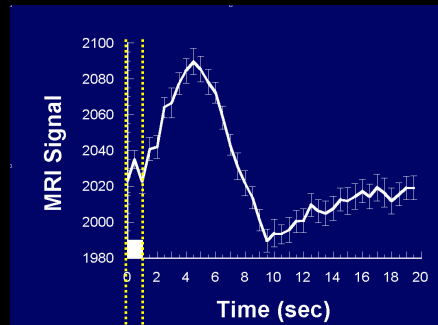
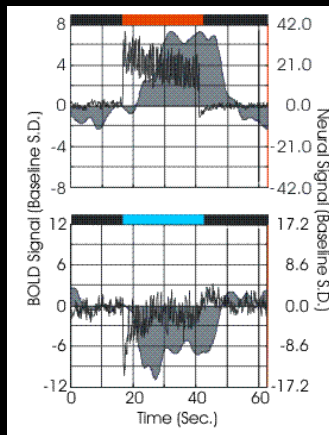


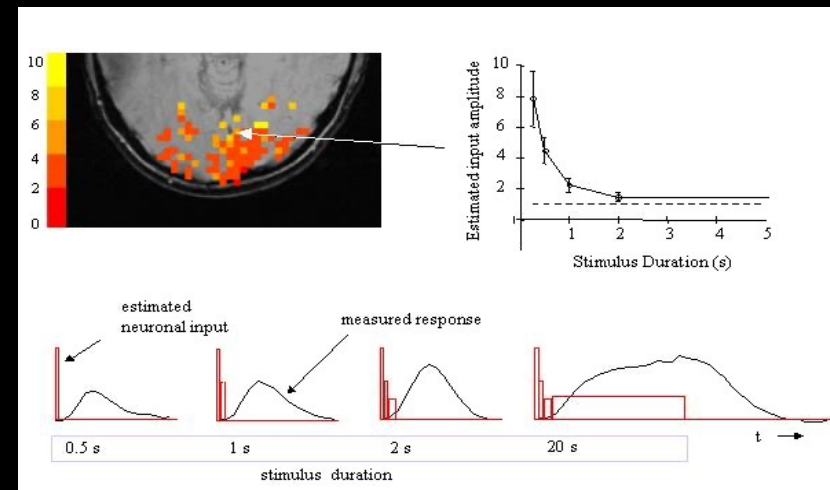
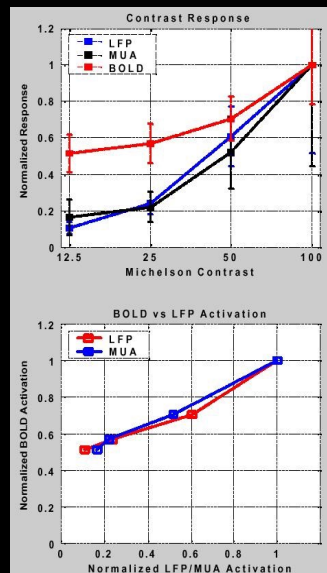
1. The Hemodynamic Response
2. Temporal Resolution
3. Spatial Resolution
4. State-dependent networks
5. Caveats, Approaches



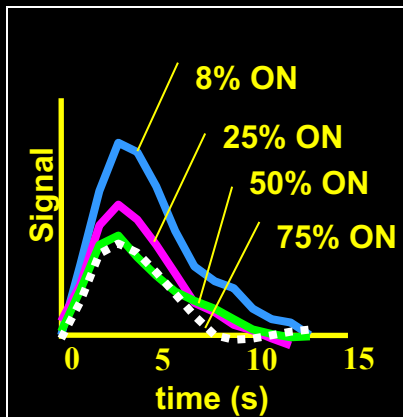
Mathiesen, et al (1998), J Physiol 512.2:555-566



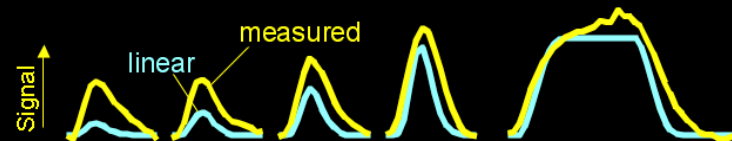
Schmuel et al. (2003) OHBM, 308



Bandettini et al, (2001) Nat Neurosci, 4: 864-866.

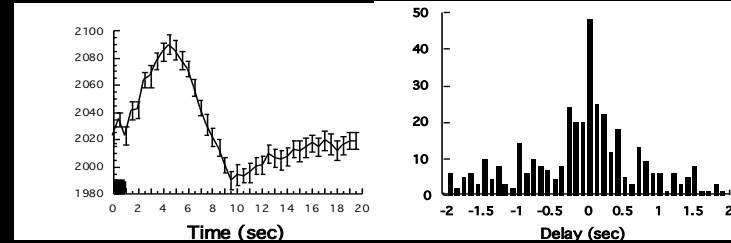
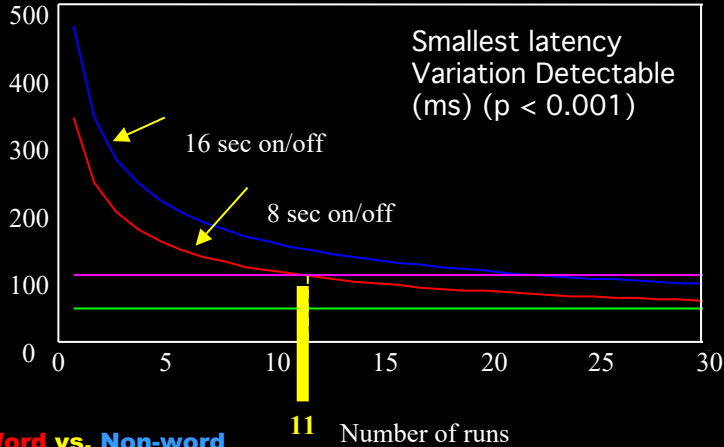
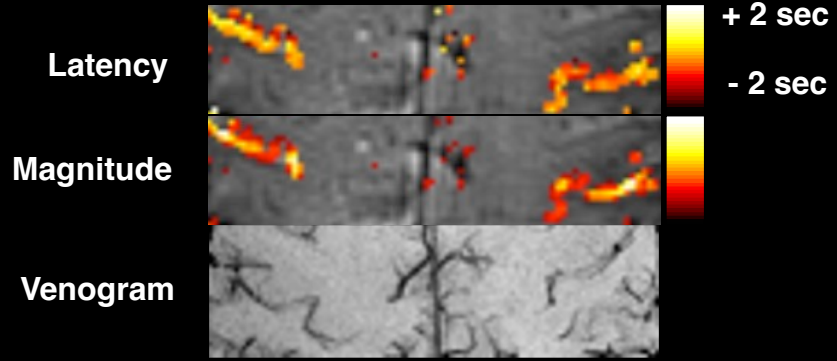


Logothetis et al. (2001) Nature, 412, 150-157



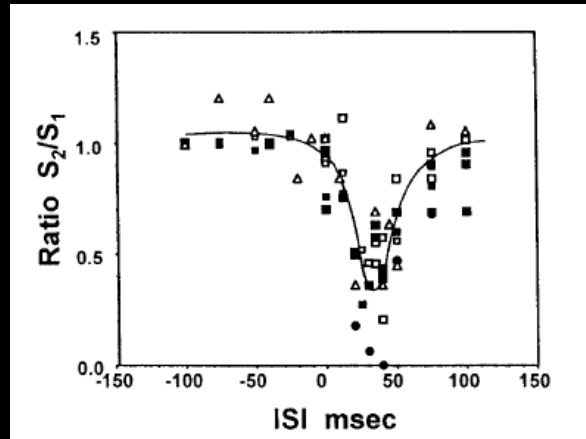
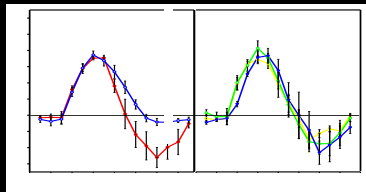
R. M. Birn, (2001) NeuroImage, 14: 817-826.

1. The Hemodynamic Response
2. Temporal Resolution
3. Spatial Resolution
4. State-dependent networks
5. Caveats, Approaches

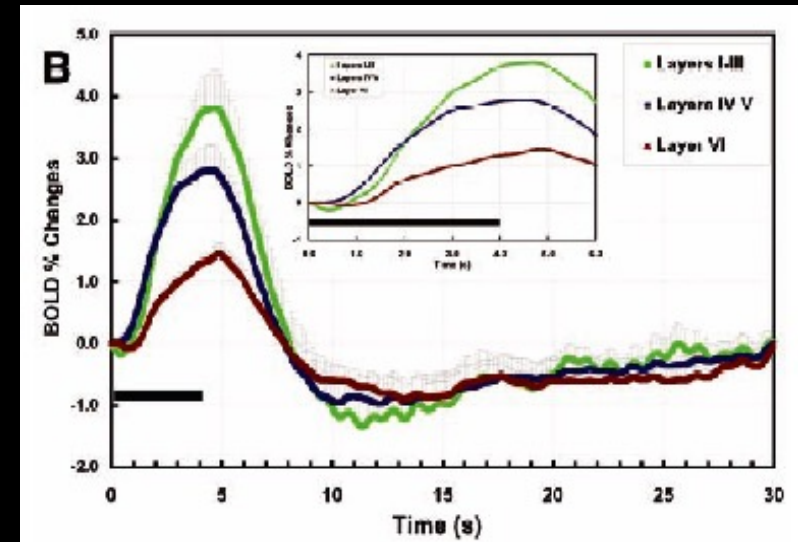


P. A. Bandettini, (1999) "Functional MRI" 205-220.

Word vs. Non-word
0°, 60°, 120° Rotation



Ogawa, et al (2000), PNAS 97 (20)11026-11031



Silva, et al (2002), PNAS 99, 15182-15187

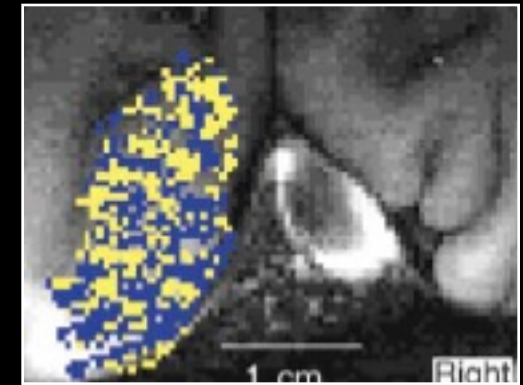
Bellgowan, et al (2003), PNAS 100, 15820-15283



1. The Hemodynamic Response
2. Temporal Resolution
3. Spatial Resolution
4. State-dependent networks
5. Caveats, Approaches

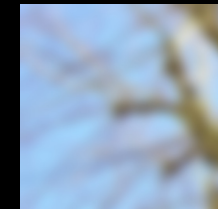


0.47 x 0.47 in plane resolution



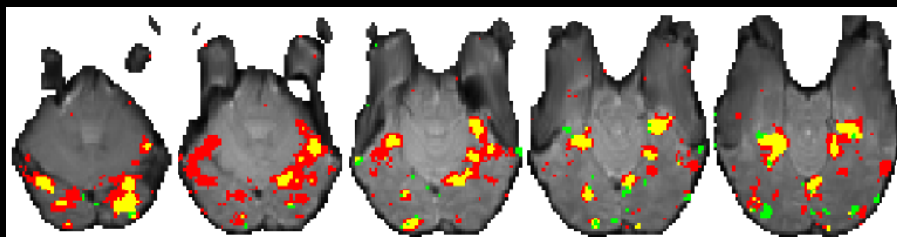
Cheng, et al. (2001) Neuron,32:359-374

Activation-based mapping: data smoothing
(classical approach)

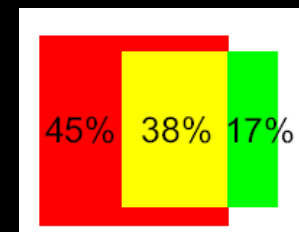


Information-based mapping: local multivariate analysis

volume scanned with MANCOVA searchlight →

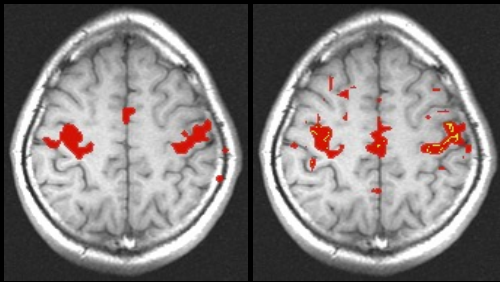


■ activation-based ■ information-based
■ intersection

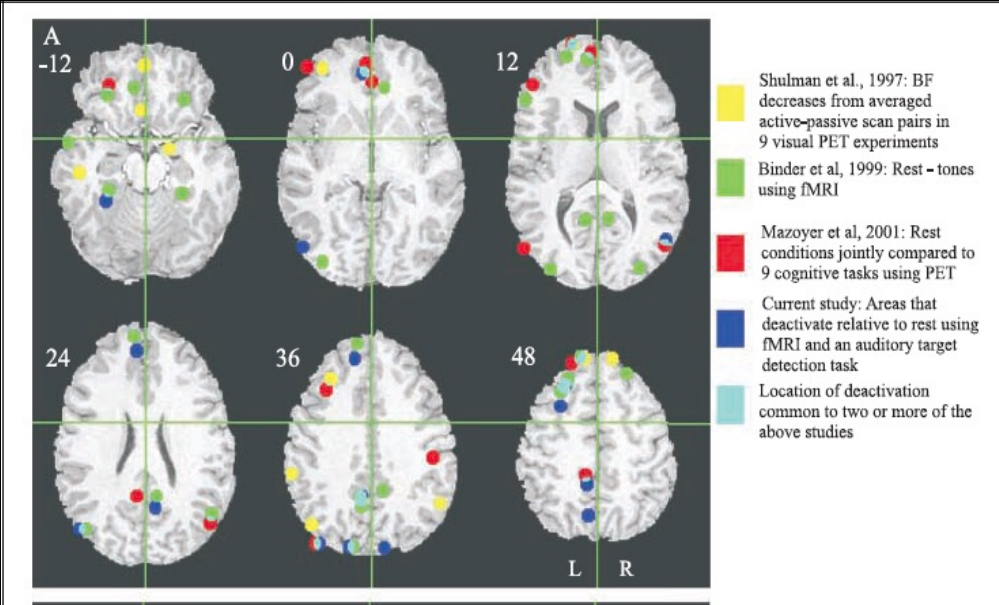
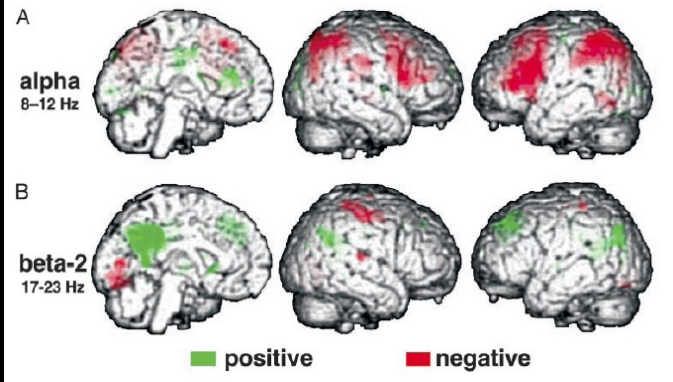


voxel sets

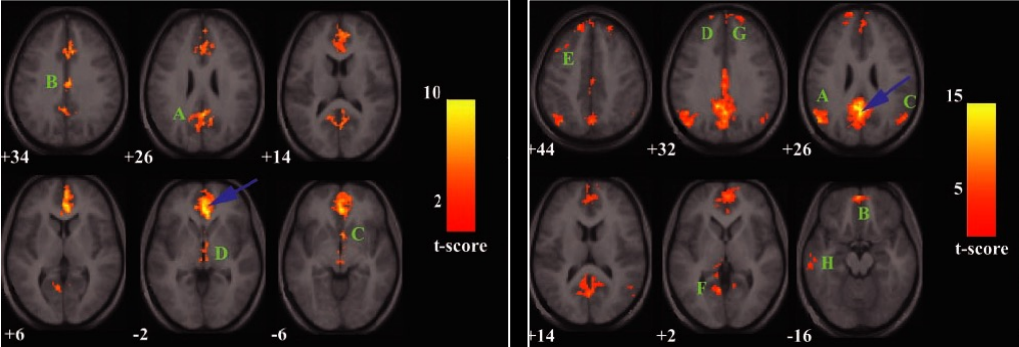
1. The Hemodynamic Response
2. Temporal Resolution
3. Spatial Resolution
4. State-dependent networks
5. Caveats, Approaches



Biswal, et al (1995), MRM 34, 537-541

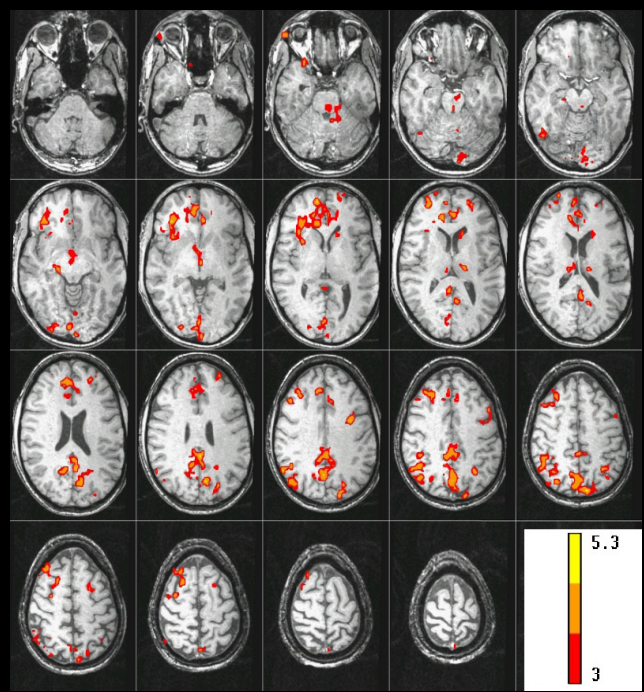


McKiernan, et al (2003), Journ. of Cog. Neurosci. 15 (3), 394-408



Greicius, et al (2003), PNAS 100 (1), 253-258

Laufs, et al (2003), PNAS 100 (19), 11053-11058



Patterson, et al (2002), NeuroImage 17, 1787-1806

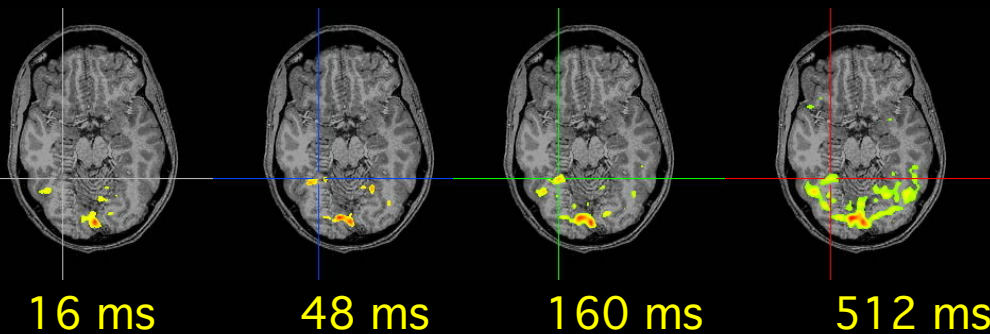
1. The Hemodynamic Response
2. Temporal Resolution
3. Spatial Resolution
4. State-dependent networks
5. Caveats, Approaches

Other approaches:

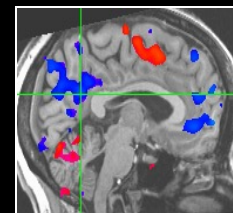
combined use of MEG, TMS, EEG, behavior, physiology, anatomy, DTI and novel processing

1. Principles of spatiotemporal pattern formation
 - fMRI resolution (spat and temp), baseline state
2. Measuring connectivity and dynamics
 - Deadline paradigm, learning, habituation (fMRI)
 - DTI and Fractional Anisotropy data is suggestive but may not be useful scale
3. Clinical aspects of anatomical and functional connectivity
 - Schizophrenia, Alzheimers, reading disorders

Deadline Paradigms



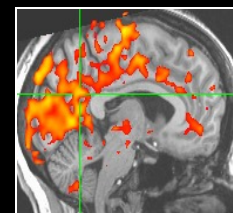
Lexical Task



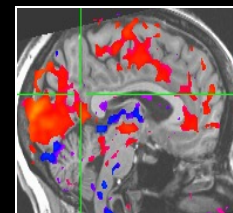
ROI



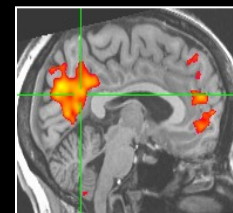
Functional Connectivity: Rest



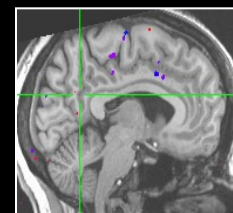
Correlation with Respiration Vol./Time



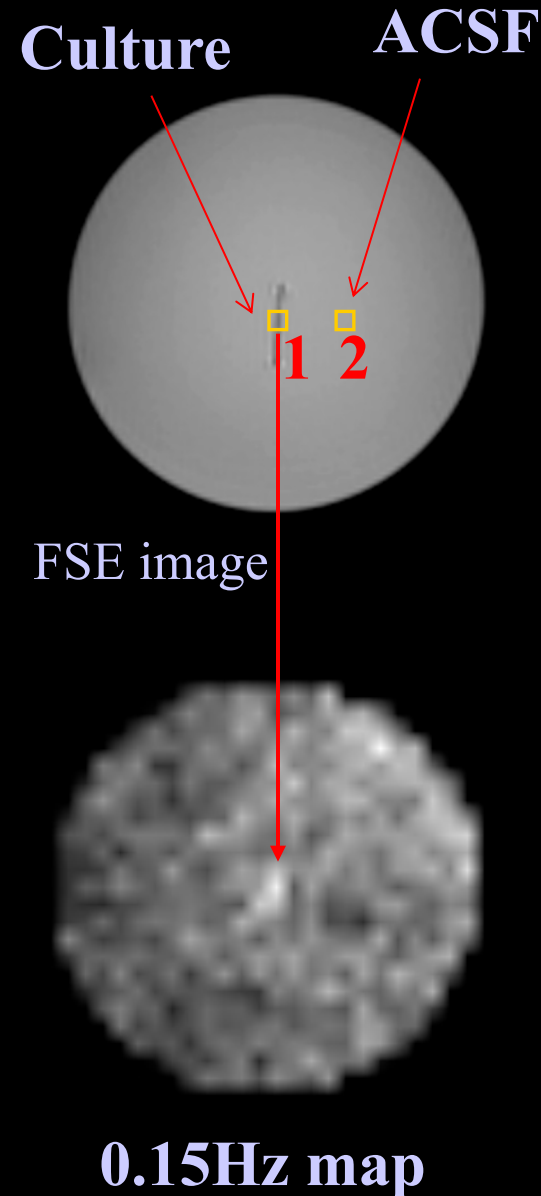
Functional Connectivity: Constant Resp.



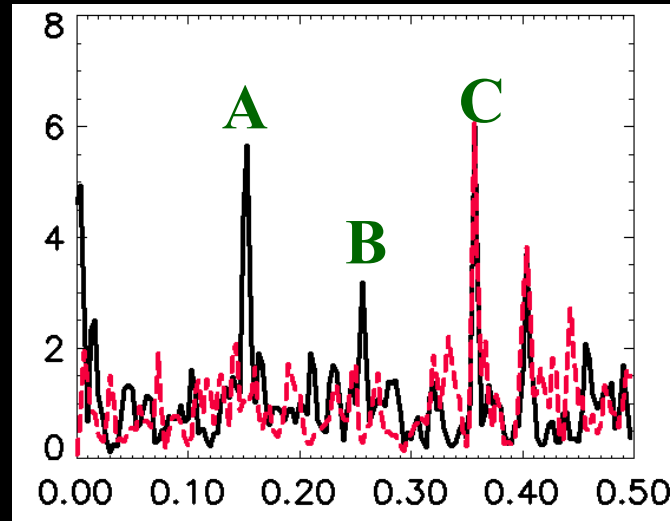
Correlation with Respiration Vol./Time: Constant Resp.



3 Tesla data

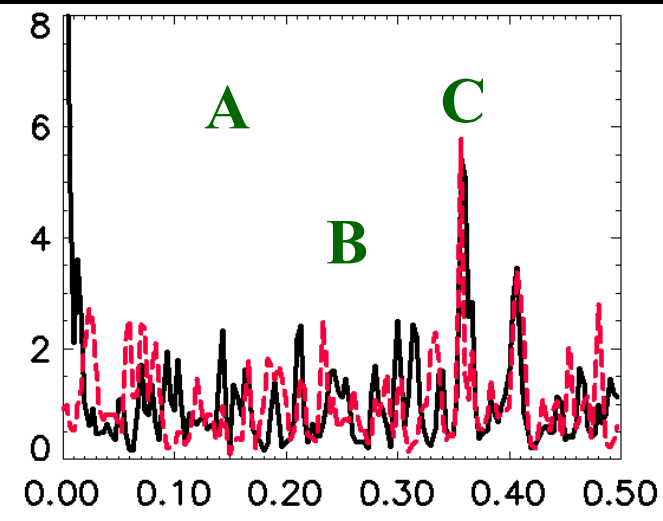


1: culture



Hz

2: ACSF



Hz

Active condition: black line

Inactive condition: red line

A: 0.15 Hz activity, on/off frequency

B: activity

C: scanner noise (cooling-pump)